

Smoke Warden AOV



Discrete smoke ventilation for corridors and stairwells

Airvent's Smoke Warden has been designed to offer a ventilation solution for multi-storey residential and commercial buildings which feature stairwells and corridors. Easy, low cost installation and maintenance is the key, with the Smoke Warden's bottom-hinged system allowing access to wiring and electronics from within the corridor.

The Smoke Warden is an AOV (Automatic Opening Vent) which operates to allow smoke into a building's smoke shaft, away from escape routes in fire situations. The Smoke Warden is fire rated and its discrete internal hinge allows it to easily blend into a building's internal architecture.

Materials

Airvent's Smoke Warden is supplied to offer a range of free areas to meet ADB requirements. An easy access panel allows for low cost maintenance and the fire rating comes from the use of a galvanised outer sheet door skin with 100kg/m³ mineral fibre insulation.

The frame is constructed from mild steel with fully welded joints, and the product can be supplied in any standard RAL or BS colour, with smoke seals fitted as standard.

Application

- > Commercial
- > Retail
- > Residential

Our range



Smoke Warden AOV

Specification

Each lobby shaft has a side or bottom hung single flap Smoke Warden AOV ventilator on each floor. Each Smoke Warden will be fire rated and is fixed vertically into the shaft opening.

The hinge mechanism is internal to the vent, which adds to the ventilator's pleasing aesthetic appearance.

Location

The Smoke Warden forms the AOV opening between the smoke shaft and the lobby/common corridor.

Control unit location

The Smoke Warden is fitted with a concealed drive open / drive closed motor, internal to the vent construction. This ensures that the system is tamper-proof and provides trouble-free operation.

Size

The ventilator has a clear internal opening size providing the requisite AOV area for either natural or mechanical ventilation.

Quality management

Units are designed and manufactured with procedures as defined in BS EN ISO 9001:2000.

Controls

All controls conform to BS EN50081-2 (EMC), electrical safety standard IEC1010-1.

System to be LonWorks Compatible.

Enclosure sizes not to exceed 320 l x 190 w x 130 h

Power supply

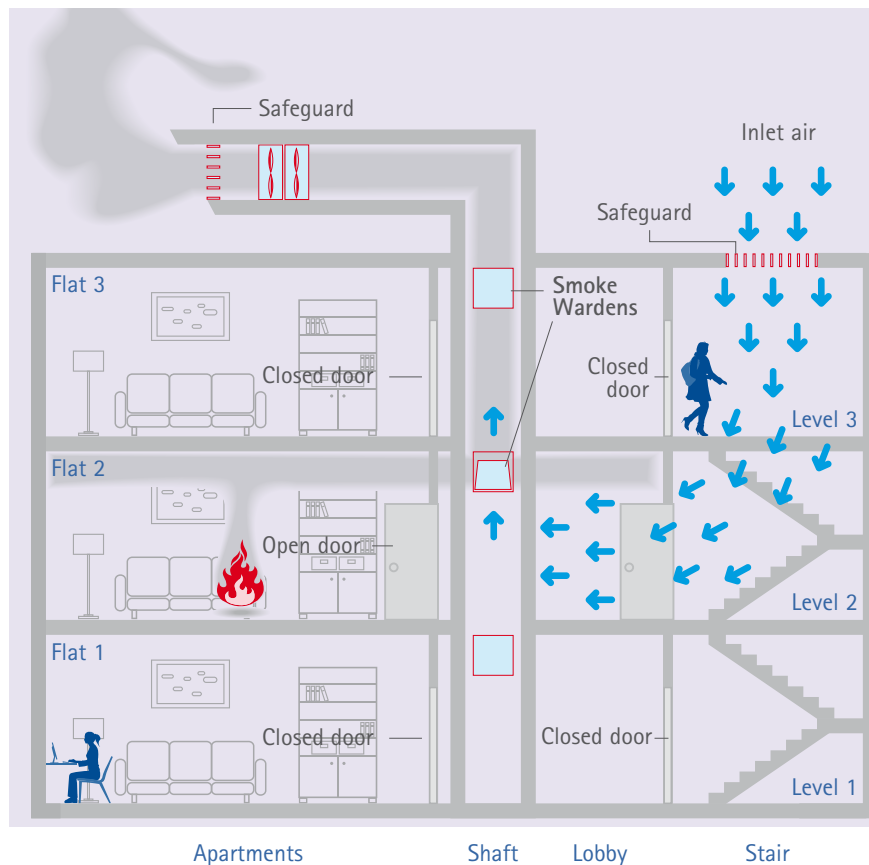
Input – 230 VAC (nominal)

Output – 24 VDC (smoothed)

The Smoke Warden is compatible with Airvent's Intelli-Vent addressable central control system and can be linked into local firemans override if required.

In all situations advice should be taken from Airvent for the optimum solution including wiring sizes and types.

Smoke Warden AOV in residential setting



Technical modifications reserved

T: +44 (0)29 2077 6160 www.airvent.co.uk



Printed upon 100% recycled paper using environmentally friendly processes
Designed and produced by Horizon Digital Media Ltd www.horizondml.co.uk

